

# VISI 1311

## Installation Manual

### SEALED SERVICE PULLEY SYSTEM



**Head Office**  
4130 – 93 Street  
Edmonton, AB T6E 5P5

**Saskatchewan Branch**  
Box 460, 103 Cenaiko Street  
Lampman, SK S0C 1N0



Manufactured in Canada

Toll Free 1-877-462-4085

Web Site [www.titanlogix.com](http://www.titanlogix.com)

E-Mail [sales@titanlogix.com](mailto:sales@titanlogix.com)

## **VISI 1311 Installation Guide**

### **WARRANTY STATEMENT**

**WARRANTY:** Titan Logix Corp. warrants all equipment of its own manufacture to be free of defects in material and workmanship for a gauge period of twelve (12) months from date of shipment. Titan Logix Corp.'s sole obligation hereunder shall be expressly limited to repair or exchange free of charge, F.O.B. Edmonton, Alberta, Canada, of such defective equipment (alternatively, Titan Logix Corp. will, at its option, refund the purchase price). Titan Logix Corp.'s obligation under this warranty is limited to the above and does not apply to exchange or repairs which are required as a result of improper installation, misuse, maladjustment, abnormal operating conditions, or lack of routine maintenance. Nor does the warranty include the furnishing of service for maintenance or problems arising from the foregoing causes. No claims for labour, installation, removal, transportation, or other expenses will be recognized. Notwithstanding any stipulation of the purchaser to the contrary, all other obligations, representations, warranties and conditions, express or implied, statutory or otherwise, including any implied warranties or conditions of merchantability, quality or fitness are hereby excluded and, Titan Logix Corp. shall not be liable for any loss, cost or damages, of any kind whatsoever, whether consequential, indirect, special or otherwise, arising out of or in connection with the equipment or any defect therein, even if caused by the negligence of, Titan Logix Corp., its employees or agents. The provisions hereof relating to the warranty and limitations hereon and limitation of liability shall continue to be enforceable between the parties notwithstanding termination of the within agreement for any reason including fundamental breach. Equipment not of, Titan Logix Corp. manufacture will carry the vendor's or manufacturer's standard warranty.

**© 2002 Titan Logix Corp.**

## VISI 1311

### INSTALLATION GUIDE

**CAUTION:** If doing an in-service installation -- Working with any toxic or flammable substance is very dangerous. Be extremely careful when drilling the hole in the top of the tank.

#### TOOLS REQUIRED:

- Pneumatic drill,  $\frac{3}{4}$ " bit, pilot bits, and cutting oil (if installing in-service)
- Files (half round or round and flat)
- Two  $\frac{1}{2}$ " and two  $\frac{7}{16}$ " wrenches
- Vise grips
- Side cutters
- Gauging tape
- Adjustable wrench

Refer to the drawing "VISI 1311: Guided Cable Design" for more information. Deburr all holes the float cable or guide cables pass through.

1. **Assemble Gauge Board:** The gauge board is shipped in sections. Bolt each board section together with the nuts and bolts supplied. Bolt the brackets (ie magnetic or welded) to the Gauge Board. Bracket mounting holes are pre-drilled.
2. **Mount Gauge Board to Tank:** Mount the gauge board on the side of the tank. The board is secured either by welding the brackets to the tank wall or through magnetic attraction. Mount close to the thief hatch if the interior assembly is to be inserted through the thief hatch. If magnetic brackets are being used, be sure each bracket is firmly contacting the tank.
3. **Drill Hole for Pulley system:** Find a location to mount the greased end of the pulley system ( $\frac{3}{4}$ " NPT male thread). This may require welding a  $\frac{3}{4}$ " collar. Test the location by inserting the PVC end of the pulley system into the clamping block at the top of the gauge board to ensure proper fit. If there is already a fitting on the tank roof but it is not properly positioned for the pulley, remove the cable (float cable) from the pulley that is **not greased** and install the proper length nipple between the 2 pulleys. Thread the greased end of the pulley into the  $\frac{3}{4}$ " collar on the tank and insert the PVC tubing into the clamping block at the top of the gauge board. Tighten the clamping block.

Note for in-service installations: Use extreme caution and plenty of cutting oil to drill a  $\frac{3}{4}$ " hole in the top of the tank (if no  $\frac{3}{4}$ " collar exists). Use the in-service float cable kit.

4. **Attaching to the float and slider:** Install slider on gauge board. Attach the clip to the float cable, then the clip to the float, and gently lower it as far as it will travel. Run the other end of the cable through the hole in the bolt on the slider then finger tighten the nut.
5. **Gauge Calibration:** Measure the fluid level with a gauge tape. Adjust the slider to the correct level and tighten the nut. Cut and remove the excess stainless steel cable. Ensure all fittings are thoroughly tightened.

## **Additional Information for Installing Guided-Float Roof Mounting Kit**

Weld 1-1/2" collars, 9" on either side of the 3/4" float cable collar. It is best to cut a 1-1/2" hole for each collar to mount the collars level. However, a minimum 3/4" hole is recommend to minimize abrasion on the guide cables.

Insert the spring and washer into the collars. Attach cable clip and stainless steel quick clip to one end of the stainless steel guide cable. Lower the cable though the hole in the washer. Thread the cable through the eyelet on the float and the eyelet on the tank floor welded clip. Attach cable clip and quick clip, pulling the cable tight to ensure it is straight. Repeat for other cable guide. Cap each 1-1/2" collar with the plugs provided.

## **Pictures**

**Roof Mounting Kit for Guided Float**



**Welded Anchor Clip  
(Eyelet bolted in place)**



**CABLE GUIDE FITTED INTO PVC SUPPORT AT TOP OF GAUGE BOARD**



**GUIDED-FLOAT ROOF MOUNTING KIT X 2**

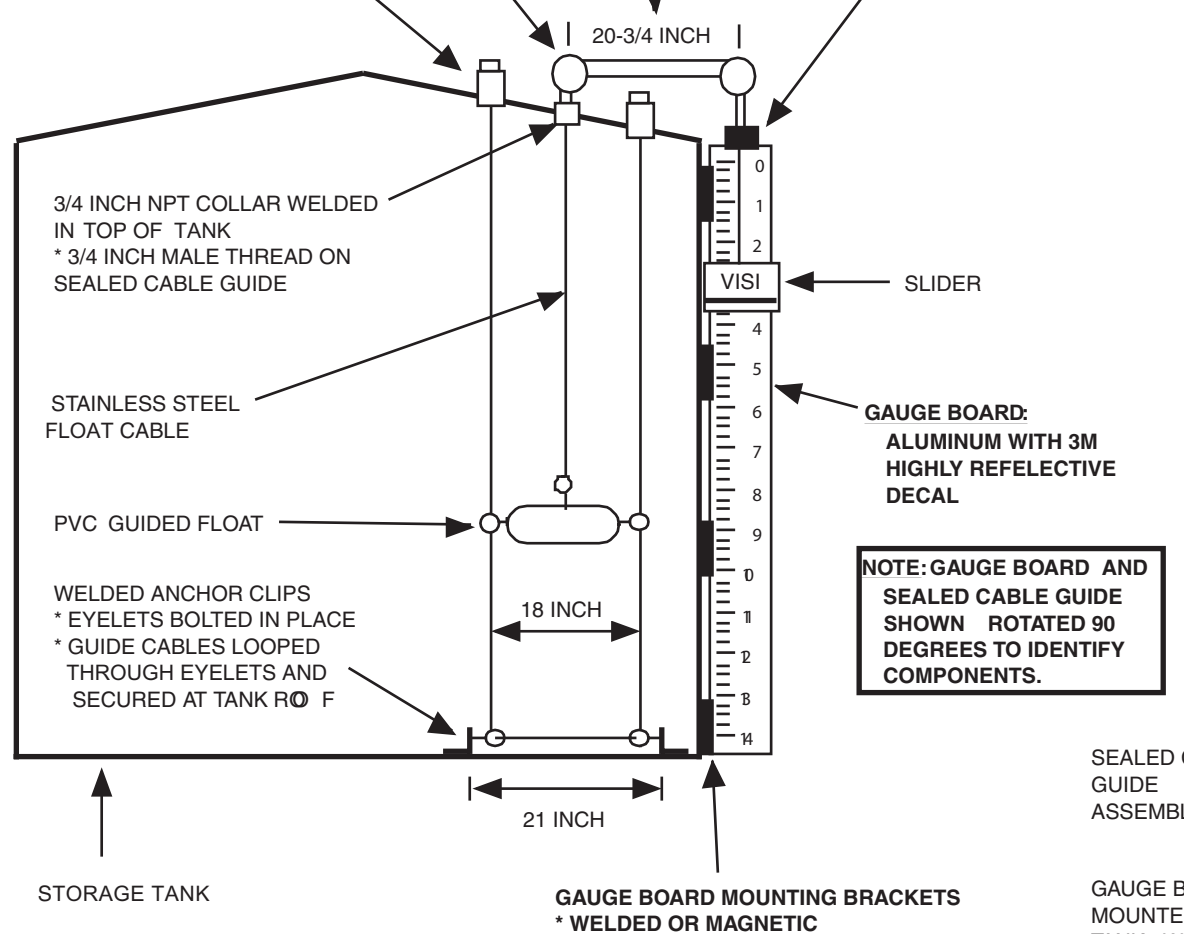
- \* COLLAR
- \* SPRING
- \* WASHERS
- \* CABLE HOLDER
- \* SEE DETAIL AT RIGHT

**GREASED SIDE OF SEALED CABLE GUIDE ASSEMBLY**

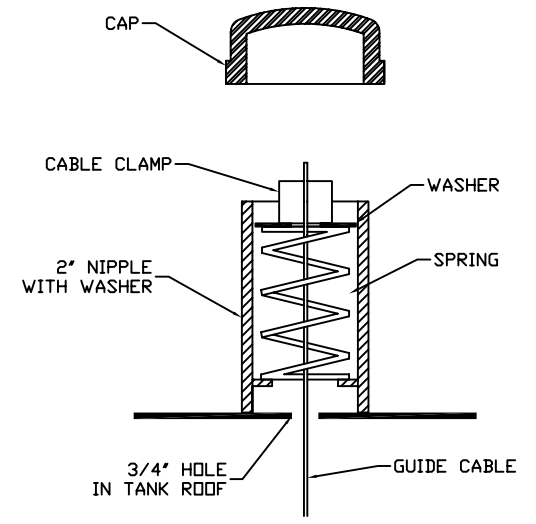
**SEALED CABLEGUIDE ASSEMBLY**

- \* 12 INCH NIPPLE TO BE FIELD REPLACED IF REQUIRED
- \* DUAL PULLEY (1 GREASED)

PVC TUBE ON CABLE GUIDE FITTED INTO PVC SUPPORT AT TOP OF GAUGE BOARD



**GUIDED-FLOAT ROOF MOUNTING KIT DETAIL**



**TANK-TOP VIEW**

