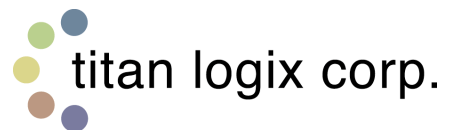


FGI 202

Flame Gard™ Ignition System Operation Manual



Head Office
4130 – 93 Street
Edmonton, AB, Canada T6E 5P5

Saskatchewan Office
Box 460, 103 Cenaiko Street
Lampman, SK Canada S0C 1N0



Manufactured in Canada

Toll Free 1-877-462-4085

Web Site www.titanlogix.com

E-Mail sales@titanlogix.com

INDEX

Warranty	
Proprietary Information	
CSA Caution	
Introduction.....	1
FGI 202 Features.....	2
FGI 202 Specifications.....	3
FGI 202 Installation.....	4
Site Selection.....	4
Mounting the Enclosure.....	4
Mounting the Coil Base.....	4
Wiring Connections.....	5
Selecting the Operation Jumpers.....	11
FGI 202 Display.....	12
Front Panel Screens	12
Circuit Board Indicator LEDs.....	13
FGI 202 Controls.....	14
Push-button Functions.....	14
Jumpers and Jumper Settings	15
Service/Run Switch.....	16
Low/High Trip Point Potentiometers.....	16
FGI 202 Operation.....	17
Modes of Operation.....	17
Auto Relight Mode.....	18
Manual Mode.....	20
Service Mode.....	21
FGI 202 Calibration.....	22
Bench Test and Initial Settings.....	22
Field/On Line Calibration.....	23
Troubleshooting.....	25

Warranty

Titan Logix Corp. warrants to each purchaser that the product is, at the time of delivery to such purchaser, free from defects in material or workmanship if used and serviced in accordance with the recommendations in Titan Logix Corp.'s Operators Manual. Titan Logix Corp. makes no other warranty, express or implied, in fact or by law.

Titan Logix Corp.'s obligation under this warranty is limited to repairing or at its option, replacing any part that returned transportation prepaid to Titan Logix Corp. and that in our judgement is defective. Except as set forth above, Titan Logix Corp. shall have no obligation or liability of any kind on account of any of the equipment, and shall not be liable for special or consequential damages.

In Particular, without limiting the generality of the above, Titan Logix Corp. does not bear any liability for damage to any other components owned by the purchaser, for loss of any information stored in computer systems of the purchaser or for any consequential damage however caused.

Titan Logix Corp. states that it makes no other guarantees or warranties express or implied by customer, trade usage or law.

Proprietary Information

The Information disclosed herein contains proprietary rights of Titan Logix Corp. Neither this document nor the information disclosed herein shall be reproduced or transferred to other documents, or used or disclosed to others for manufacturing purposes, or for any other purpose except as specifically authorized in writing by Titan Logix Corp.

CSA Caution

Please read this manual carefully and keep the product within stated current and voltage limits.

Introduction

What is a "FLAME-GARD™ IGNITION" System?

The term "**FLAME-GARD™**" refers to that portion of a system that monitors a pilot flame, takes action to stop the flow of fuel gas if the pilot flame fails, and brings the fuel gas on in an orderly manner when the system is commanded to restart.

The term "**IGNITION**" refers to the portion of the system that provides a means to ignite the pilot flame.

The "**FLAME-GARD™ IGNITION**" system is not the only device in the fuel gas loop. Other instrumentation such as temperature controllers, level switches and high temperature shutdowns can also take control and shut off fuel gas to the burner system.

The FGI 202 System consists of:

- A fibreglass enclosure containing two circuit boards (The FGI 202-T and FGI 202).
- Two ignition coils with circuit boards (FGI 100-S) mounted in each of the bases.
- Two flame detection probes and two-ignition electrodes c/w pilot mounting brackets.
- High voltage ignition wires and probes extension wires.

WARNING:

The FGI 202 Flame Gard™ Ignition system was designed for use in natural draft or atmospheric burners and should not be considered for use in forced air burner systems. Typical atmospheric burner systems are found in U-tubes (treaters, line heaters, glycol heaters, glycol reboilers, salt bath heaters etc.), direct-fired heaters, and non-blower type furnaces.

FGI 202 Features

- Enclosure CSA approved for Class 1, Division 2 locations.
- Input Power can be +12 to +30 VDC, 9 or 18 VAC.
- Thermocouple based system (type K thermocouple encased in 446 SS).
- DC Voltage spark generators with spark electrodes included (one for each tube/burner).
- Auto relight or manual operation, push button and/or jumper selected.
- Flame fail contacts supplied for flame fail alarm (each tube/burner, independent).
- Vacuum Florescent Display for operating functions and signals (one line per tube/burner).
- Remote Start/Stop control standard features.
- 'RUN/SERVICE' mode switch for field testing and start up
- Large, easily accessible field termination terminal blocks.
- Pilot signal displayed on front panel.
- Two-trip point action with an Atmospheric purge cycle. Trip levels are adjustable with on board trim pots and each tube/burner is independent.
- Supports continuous current solenoids or the Skinner Magnalatch (pulse open, pulse closed) solenoids.
Main burner "soft start" feature standard and jumper selectable.
- Minus 40 C to plus 60 C operating range with no internal heater required.
- Very low power consumption. Less than one (1) Watt when using Skinner Magnalatch solenoids and sleep mode.
- All circuits are transient protected and are fail-safe.

FGI 202 Specifications

- Enclosure:
- Fibreglass 10" x 8" x 6"
 - CSA and UL approved for Class 1, Division 2 locations
 - Enclosure type 4, 4X, 12, 13
- Circuit boards:
- All solid state, cpu based.
 - CSA approved for class 1, division 2 locations.
- Ignition base and coil:
- CSA approved for non-hazardous area only.
- Power requirements:
(supplies)
- 11 to 30 volts DC (ie: 12 or 24 volts dc as standard)
 - 9 or 18 volts AC (50 or 60 Hz, 1 phase)
- Supply current:
- 2.0 amps surge (limited), 0.015 - 2 amps run
- Power Consumption:
- FGI 202 only:
 - 12 volts - Display on - 106 ma or 1.3 watts
 - 12 volts - Display off - 43 ma or 0.6 watts
 - 24 volts - Display on - 66 ma or 1.6 watts
 - 24 volts - Display off - 35 ma or 0.9 watts
 - With constant current solenoids add power required by
- Solenoids
- Limited power output to solenoids, Max = 60
- Watts/Solenoid
- Operating Conditions:
- -40 ? C to +60 ? C
- Warnings:
- THIS EQUIPMENT IS SUITABLE FOR USE IN CLASS 1, DIVISION 2 GROUPS (C&D) OR NON HAZARDOUS LOCATIONS ONLY.
 - WARNING:** -EXPLOSION HAZARD-
SUBSTITUTION OF COMPONENTS MAY IMPAIR SUITABILITY FOR CLASS 1, DIVISION 2
 - WARNING:** -EXPLOSION HAZARD-
DO NOT REMOVE OR REPLACE THE POWER TERMINAL OR FUSE UNLESS POWER HAS BEEN SWITCHED OFF OR THE AREA HAS IS KNOWN TO BE NON-HAZARDOUS.
 - WARNING:** -EXPLOSION HAZARD-
DO NOT DISCONNECT EQUIPMENT UNLESS POWER HAS BEEN SWITCHED OFF OR THE AREA IS KNOWN TO BE NON-HAZARDOUS

FGI 202 Installation

Site Selection

The FGI 202 "Flame Gard / Ignition" system enclosure is CSA approved for a Class 1, Division 2 (C&D) area classification. This means the system enclosure must be mounted outside any Class 1, Division 1 building or area. The system can be mounted on the unit skid or on a building wall as long as it does not infringe on a Class, Division 1 area.

The spark generators, however, must be mounted in a non-hazardous area as there is a potential of a spark arcing across the output terminals of the coil or along the insulated high voltage leads. The ideal location for the spark generator is inside the burner housing.

The enclosure should be mounted in a location so that it faces away from the burner housing so that the operator is facing both the enclosure and the burner housing while operating the unit. Other considerations are panel access, traffic, wire runs and visibility. The enclosure should be mounted about 5 1/2 feet above ground level.

Mounting the Enclosure

The FGI 202 "Flame-Gard™ / Ignition" system enclosure is a fibreglass box 10" x 8" x 6" complete with mounting tabs. The enclosure weighs less than 5 pounds so heavy duty supports are not required, but the unit should be firmly mounted, as the push buttons on the front panel have to operate.

Mounting the Coil Base

The coil base must be mounted in a non-hazardous location and the inside of the burner housing is just that. The generator base contains the DC generator circuit card mounted underneath and the coil on top. The mounting base has four holes for mounting the unit either on a plate or on a flat surface. The terminal access to input and output (high voltage) are all-accessible from the top of the unit.

NOTE: Prior to mounting the coil base, check the jumper positions for 12 or 24 VDC operation and set according to your supply voltage. If the supply voltage is 9VAC use the 12VDC jumper setting. On a supply voltage of 18VAC use the 24VDC setting.

FGI 202 Installation (continued)

Wiring Connections

SUPPLY INPUT (DC POWER): When using DC power, connect 12 or 24 VDC to the '12V-30VDC' terminal TB3 (1) on the FGI 202T circuit board. Attach supply common-to-common terminal TB3 (2). Make sure the system is grounded by bringing a good earth ground to the terminal marked "earth ground", TB3 (3).

User Power Supply

FGI202T Terminal

12 or 24 VDC +ive =====>	TB3 (1)	"11V-30VDC OR 8.5V-19VAC"
12 or 24 VDC common =====>	TB3 (2)	"COMMON OR 8.5V-19VAC"
Earth Ground =====>	TB3 (3)	"EARTH GROUND"

SUPPLY INPUT (AC POWER): When using AC power (120 or 250 VAC), as the source power, it must be transformed down to either 9 or 18 VAC with an external AC/AC transformer. When using 9 VAC the system will rectify the AC voltage and filter it to 12 VDC. The Ignitor circuit jumper must be set to 12 VDC and the Main and Pilot solenoids must be rated for 12 VDC. When using 18 VAC, the system will rectify the input voltage to 24 VDC the Ignitor circuit jumper must be set to 24 VDC and the Main and Pilot solenoids must be rated for 24 VDC. Use input terminals TB3 (1) for AC hot, TB3 (2) for AC neutral and TB3 (3) for earth ground.

User AC Source

External Transformer

FGI202T Terminal

120 VAC Hot =====>	Black Wire // Green Wire =====>	TB3 (1)
120VAC Neutral =====>	Black Wire // Green Wire =====>	TB3 (2)
Ground =====>	Ground =====>	TB3 (3)

Note: Above hook-up is for 18VAC. For 9VAC use Green/Yellow center tap wire with either green wire.

FGI 202 Installation (continued)

TO IGNITOR: Three conductors (#18 wire is sufficient) must be routed from the FGI 202 enclosure to each of the Ignition Coil Base terminal blocks.

FGI202T Terminal

Ignition Coil Base Terminal

Tube/Burner A

TB1 (1)	=====>	VIN
TB1 (2)	=====>	COMMON
TB1 (3)	=====>	CONTROL

Tube/Burner B

TB2 (1)	=====>	VIN
TB2 (2)	=====>	COMMON
TB2 (3)	=====>	CONTROL

TC INPUT: The T/C extension wire need not be thermocouple wire as the pilot signal is only a relative temperature signal and the cold junction created by the non-thermocouple extension wire has little effect on the detection of a pilot flame. If a thermocouple cable is run, then the cable should be light gauge, twisted pair and shielded. If a shield is run with the thermocouple wire, only attach the shield to the main terminal block on the terminal provided, and leave the other end of the shield open. Never ground both ends of a shield wire as this ground loop will attract miscellaneous noise and cause the T/C signal to be very erratic. **NOTE:** The colour code for Type K Thermocouple Wire is: Yellow = +ive, Red = -ive.

TC Extension Wire

FGI202T Terminal

Tube/Burner A

Yellow Extension Wire	=====>	TB1 (10)
Red Extension Wire	=====>	TB1 (11)
	=====>	TB1 (12) Shield if applicable

Tube/Burner B

Yellow Extension Wire	=====>	TB2 (10)
Red Extension Wire	=====>	TB2 (11)
	=====>	TB2 (12) Shield if applicable

FGI 202 Installation (continued)

REMOTE UNIT CONTROL: The FGI 202 provides for a remote start and remote stop control function from an RTU or PLC. Remote Start/Stop can be configured to either start/stop each burner or can be configured to start/stop the unit. The signal that is required to activate the start and stop functions is simple set of dry contacts rated for a minimum of 24 volts at 500 ma. The "Remote Start/ Remote Stop" contacts should be viewed as a simple "burner switch" that starts or stops the FGI 202 or each burner when turned on (closed) or turned off (opened).

User Start/Stop Switches (each tube)

FGI202T Terminal

Tube/Burner A

SW + =====> TB3 (8)
SW - =====> TB3 (9)

Tube/Burner B

SW + =====> TB3 (10)
SW - =====> TB3 (11)

User Start/Stop Switch (unit)

SW + =====> TB3 (8) =====> TB3 (10)
SW - =====> TB3 (9) =====> TB3 (11)

NOTE: Remote Start and Remote Stop functions are intended for just that, remote units controlled from a central site (eg: field line heaters in a gas gathering system, controlled from a central gas plant). An alternate method of stopping and starting an FGI 202 that is hard wired into a central control system, is to simply drop the power to the unit for stopping and applying power to start. The FGI 202 on a power failure will stop the burner (pilot and main) and the display will go blank. If the display is blank on the FGI 202, it will serve as an indicator that the master system has locked the unit out and does not want the burners to run. When the master system restores the power, and the unit is not forced into 'MANUAL' mode, the FGI 202 will automatically relight the burner system.

FGI 202 Installation (continued)

ALARM OUT CONTACT: The alarm out contact is an optically isolated solid-state switch that is like a set of "dry contacts". The "contacts" are good for 0.100 amps at 60 volts AC or DC (with DC as the preferred voltage). Even though the terminal blocks are marked '+' and '-', the switch is not polarity dependent so either wire from the alarm circuit can be connected to either terminal. The "contact" will be open when the FGI 202 is in "flame failure" mode and closed when in "pilot proved". The one exception to this switch action is when the system is in automatic and is trying to relight the pilot burner. The "flame failure" alarm is not announced until the system is unsuccessful in lighting and proving the pilot after the third attempt.

FGI202T Terminal

User Alarm Circuit

Tube/Burner A

TB3 (4) =====> User Load +
TB3 (5) =====> User Load -

Tube/Burner B

TB3 (6) =====> User Load +
TB3 (7) =====> User Load -

FGI 202 Installation (continued)

MAIN AND PILOT SOLENOIDS (CONSTANT CURRENT): Both AC and DC constant current solenoids are not polarity sensitive so that either extension wire from the solenoid coil can be hooked into the solenoid terminal block in the FGI 202. One wire will attach to 'OPEN', the other to 'COM' on both the 'PILOT' and 'MAIN' solenoids.

FGI202T Terminal

Pilot Solenoid Coil Wire

Tube/Burner A

TB1 (4) =====> Wire # 1

TB1 (5) =====> Wire # 2

Tube/Burner B

TB2 (4) =====> Wire # 1

TB2 (5) =====> Wire # 2

FGI202T Terminal

Main Solenoid Coil Wire

Tube/Burner A

TB1 (7) =====> Wire # 1

TB1 (8) =====> Wire # 2

Tube/Burner B

TB2 (7) =====> Wire # 1

TB2 (8) =====> Wire # 2

The valve portion of the solenoid must be tubed into the pneumatic control in a normally closed configuration. For example, the ASCO Red Hat solenoid requires supply to port two (2), output to port one (1) and the vent to port three (3). The expression is: "In - 2, Out - 1, Vent - 3".

NOTE: The maximum power output to constant current solenoids is 60 watts (2 amps at 30 VDC). If your solenoid draws more power or is AC voltage, interposing relays will have to be configured into your system.

FGI 202 Installation (continued)

MAIN AND PILOT SOLENOIDS (PULSE OPEN/CLOSE): Pulse solenoids are unique in that the solenoid is operated open and closed by short voltage pulses. The attractive feature of these solenoids is that there is no power consumed while the solenoid is in the open or closed position. Their weakness, however, is that these solenoids are not totally fail safe. The FGI 202 will insure that the solenoids close even if the power to the unit fails as there is sufficient power stored in capacitors C1 & C2 on the FGI 202-T board that the microprocessor uses when it detects the power dropping. While the FGI 202 will look after a "fail safe" in a power fail situation, the solenoid cannot be closed if either the 'close' or 'common' wires have become detached or broken. Titan Logix Corp. has used the Skinner/Honeywell Magnalatch solenoid in many of our systems with excellent results.

If a pulse type solenoid is being used, three wires must be routed to each solenoid from the FGI 202. Polarity and wire identification must be observed. The Magnalatch solenoid has colour-coded wires and the hook up to the FGI 202 is as follows:

FGI202T Terminal

Pilot Solenoid (Magnalatch) Coil Wire

Tube/Burner A

TB1 (4) =====> Red wire "open"
TB1 (5) =====> White wire "common"
TB1 (6) =====> Black wire "close"

Tube/Burner B

TB2 (4) =====> Red wire "open"
TB2 (5) =====> White wire "common"
TB2 (6) =====> Black wire "close"

FGI202T Terminal

Main Solenoid (Magnalatch) Coil Wire

Tube/Burner A

TB1 (7) =====> Red wire "open"
TB1 (8) =====> White wire "common"
TB1 (9) =====> Black Wire "close"

Tube/Burner B

TB2 (7) =====> Red wire "open"
TB2 (8) =====> White wire "common"
TB2 (9) =====> Black wire "close"

The valve portion of the SKINNER MAGNALATCH solenoid must be tubed into the pneumatic portion of the control system in a normally closed configuration. That requires that the supply be hooked to port one (1) or 'P', the output to port-to-port two (2) and the vent to port three (3).

FGI 202 Installation (continued)

Selecting the Operation Jumpers

There are four jumpers that have to be set prior to applying power to the unit. The jumpers are found on the main board (FGI 202-M) in the upper left corner. The jumper labels and their function are as follows:

NOTE: All jumpers on the FGI 202-M board are not tube related but rather effect the entire unit.

IN=SLEEP ENABLE - If this jumper is in (ie: the jumper plug over top of both jumper posts) then the front panel Displays will turn off (ie: go to sleep) ten minuets after the last panel push button was pressed. To wake the lights up, simply push any front panel push button once. When the panel DISPLAY'S are reactivated, the panel push buttons will respond to their designated function.

IN=PULSE OUTPUT - If this jumper is in, the system will issue a voltage pulse to open and close both the MAIN and PILOT solenoids. If the jumper is out, the system will supply a continuous current to both the MAIN and PILOT solenoids - when applicable - to keep them open and will take the current off to close them. It should be noted here that applying a pulse to a continuous current solenoid will simply open, and then very quickly close the solenoid with no damage to the solenoid. However, if a constant current is applied to a pulse solenoid the coils within the solenoid could be damaged.

IN=MANUAL ONLY - If this jumper is in, the system will be held in the 'MANUAL' mode of operation. Any attempts to switch the unit to 'AUTO' by pushing the 'AUTO/MAN' push button will be ignored. The Display will not flash (even though the system is in 'MANUAL'), and there will be no attempts to relight the burner system after a failure. If the jumper is out, the 'AUTO/MAN' push button is enabled and either the 'AUTO' or 'MANUAL' mode of operation can be selected. If the 'AUTO' mode is selected, the Display will be solid. If the system is switched to 'MANUAL' the Display will flash quickly. In 'AUTO' the system will attempt three relights after a flame failure before issuing and external alarm, in 'MANUAL' there are no attempts to relight.

IN= SOFT START - If this jumper is in, the main burner when started will go through a series of start/stop actions (ie: the "Main" solenoid will be pulsed on/off to start/stop the main burner). Soft Start is intended to prevent filling the fire tube or combustion chamber with too much fuel with insufficient draft to draw it through the entire unit. Short bursts of a combustible mixture will establish draft that will sustain combustion.

FGI 202 DISPLAY

The FGI 202 display is a Vacuum Florescent display rated from -40 to +85 Deg C and has a matrix of two lines of 20 characters. Both the top and bottom lines are used on the FGI 202, the top line for Burner/Tube A and the bottom line for Burner/Tube B.

The user has four screens of information to choose from and can be accessed by pressing the "DISPLAY" push button. Pressing the "DISPLAY" button causes the screen to revolve thorough the following screens:

- a) Main Control Screen
- b) Solenoid Position Screen
- c) Trip Points and Thermocouple Level Screen
- d) Fail Count Screen

By activating any of the push buttons that cause valid operations to the unit will, cause the current display to be changed to the Main Control Screen if not currently on that screen. The FGI 202 has a 15-minute timer that gets activated on power up or any key press. After 15 minutes with no key activity the FGI 202 will go into one of two modes of "Sleep", depending on the Sleep Jumper position. With the jumper in the "Sleep" mode the screen will go completely blank, which reduces the power consumption of the unit. This is the desired jumper setting for units operating from a battery /solar panel combination. The second mode of sleep (Sleep Jumper out), allows the screen to be scrolled from right to left. This scrolling prevents the phosphorous in the display from burning out over prolonged usage. The display, when scrolling, will display one of two messages, "Burner O K " or "Burner Down". This is an indication of the burner status.

MAIN CONTROL SCREEN

This screen indicates to the user what the status of the FGI 202 is and what activities are taking place at any one time. The screen indicates that: the ignitor is being told to spark; solenoids are being turned off and on; trip points have been reached; or any manual operations are taking place. In other words, this screen gives the operator the "play by play" of what the unit is doing at any given time. The thermocouple signal (given as simply a "signal") is also given such that pilot flame and strength can be observed through its range.

SOLENOID POSITION SCREEN

With the Solenoid Position Screen set as the active screen, the user can follow the status of the main and pilot solenoids. The status is indicated by "ON" or "OFF" text.

TRIP POINT AND THERMOCOUPLE LEVEL SCREEN

This screen indicates the current setting of the High and Low Trip Points (in pilot signal units) along with the current pilot signal value. It is possible to have a faulty or badly wired (wire condition or polarity) thermocouple probe, the FGI 202 will sense there is a problem and indicate this by placing an "XX" in the thermocouple signal digit positions. The high and low trip position settings can be changed with the "on board" potentiometers. (See section on FGI Calibration).

FAIL COUNT SCREEN

The Fail Count Screen simply indicates the number of times the FGI 202 has restarted itself since the last reset of the Fail Count. Since the ESD and Remote Stop do not increment this count, it serves as a pilot or main burner "in trouble" indicator as the system has had to restart the burner the number of times indicated on the screen. The Fail Count can be reset by pressing the Display Button and holding it down for five (5) seconds while the Fail Count Screen is active. If any of the other screens are active, the reset will not occur.

Circuit Board LED Indicators

ABOVE LOW TP: This LED comes on when the Pilot Signal (ie: the temperature read by the thermocouple) exceeds the low trip point. This LED is found on the main board (FGI 202-M) in the upper left portion, near the 'LOW ADJUST' potentiometer.

ABOVE HIGH TP: This LED comes on when the Pilot Signal (ie: the temperature read by the thermocouple) exceeds the high trip point. This LED is found on the main board (FGI 202-M) in the upper left portion, near the 'HIGH ADJUST' potentiometer.

POWER FAIL DETECT: This LED will never be on solid. The LED will only flash to indicate that the FGI has registered a power failure and that it is taking action to do an orderly shutdown of the burner system.

FGI 202 Controls

Push Button Functions

BURNER ESD (Emergency Shut Down): At any time this button will close both solenoids, do a purge of the system, and set the unit in 'MANUAL' mode.

DISPLAY MENU: This button causes the system to scroll through the four Display Screens.

See above (FGI 202 Display) for available screens.

AUTO/MAN: This button will switch between 'AUTO' and 'MANUAL' modes. Switching between 'AUTO' and 'MANUAL' has no effect on a normally operating burner system.

SWITCH MAIN: In 'MANUAL' or 'SERVICE' mode, this button will open and close the main burner solenoid. The solenoid will open only if the pilot flame is proved (ie: the Pilot Signal is above the Low Trip Point), and close only if the solenoid is open. In 'AUTO' mode this button has no effect.

OPEN PILOT: In 'MANUAL' or "SERVICE" mode, this button will open the Pilot Solenoid to allow fuel gas to flow to the pilot burner. Releasing the button prior to a Pilot Proved condition, will close the solenoid. In 'AUTO' mode this button has no effect.

PILOT IGNITION: In 'MANUAL' or 'SERVICE' mode, this button will ignite the sparker. In 'AUTO' mode this button has no effect.

FGI 202 Controls (continued)

Jumper and Jumper Settings

MAIN BOARD (FGI 202):

J1 SLEEP ENABLE (located in the centre left on the main board): With this jumper in the IN position, Sleep Mode is enabled. In the OUT position, Sleep mode is disabled.

J2 PULSE OUTPUT (located in the Centre left on the main board): With this jumper in the IN position, a pulse will be sent to open or close the solenoids. Use this option if you are using Magnalatch solenoids. In the OUT position, constant current will be supplied to the solenoids. Use this option if you are using continuous current solenoids

J3 MANUAL ONLY (located in the Centre left on the main board): With this jumper in the IN position, the FGI 202 will not enter 'AUTO' mode. In the OUT position, 'AUTO' mode may be enabled normally.

J4 SOFT START (located in the Centre left on the main board): With this jumper IN the main burner solenoid will pulse on/off to bring the main burner on in a ramp fashion. In the OUT position the main burner comes on full with the solenoid opening.

J5 COM. TO E. GND (located in the Centre right on the main board): With this jumper IN the electronic common will be attached to the Earth Ground terminal on TB3 of the FGI 202-T card.

SPARKER BOARD (FGI 202-S):

J1 and J2 Input Voltage (located in the lower left corner on the sparker card): These jumpers set the input voltage for the sparker unit. Use the IN position if you are using 12V input voltage. Use the OUT position if you are using 24V input voltage. Both jumpers **MUST** be set to the same position.

FGI 202 Controls (continued)

Service/Run Switch

The 'SERVICE/RUN' mode switch is located near the Centre of the FGI 202-T circuit board. It is used to switch the FGI 202 between 'SERVICE' mode and 'RUN' mode. ('RUN' mode is defined as 'MANUAL' mode or 'AUTO' Relight mode). The 'SERVICE' Mode allows the FGI 202 to be operated manually and will lock out any unwanted attempts to relight the burner while the system is being worked on. The 'AUTO/MAN' is non-operative while the switch is in 'SERVICE' mode and the Display will flash as if the system is in 'MANUAL'.

NOTE: It is recommended to set the FGI 202 in 'SERVICE' mode prior to applying power for the first time after installation.

Low/High Trip Point Potentiometers

LOW ADJ: The Low Adjust potentiometer (Pot) adjusts the Low Trip Point level. The Low Trip Point level is the point at which the pilot signal will determine the Pilot Proved level when rising, and the end of the Purge cycle when falling. Adjusting the Pot clockwise will raise the level. Adjusting the Pot counter clockwise will lower the level. The factory setting and the bench calibration point for the Low Trip Point is 200 degrees C.

HIGH ADJ: The High Adjust Pot adjusts the High Trip Point level. The High Trip Point level is the point at which the pilot signal will turn the Main burner on when rising, and the Flame Fail point complete with the start of the Purge cycle when falling. Adjusting the Pot clockwise will raise the level. Adjusting the Pot counter clockwise will lower the level. The factory setting and the bench calibration point for the High Trip Point is 600 degrees C.

FGI 202 Operation

Modes of Operation

AUTO RELIGHT MODE: This mode is the usual operating mode of the FGI 202. In 'AUTO' mode the FGI 202 will light and monitor the pilot flame and start the main burner automatically. To enter 'AUTO' mode, put the 'SERVICE/RUN' mode switch in the 'RUN' position then press the Auto/Man switch on the front panel.

MANUAL MODE: This mode is normally used for troubleshooting the burner system. It allows a user to operate any function of the FGI 202 manually. To enter 'MANUAL' mode, (with the Service mode switch in 'RUN' and system in 'AUTO') press the 'AUTO/MAN' switch. The Display will go into a fast flash mode indicating the unit is in 'MANUAL'.

SERVICE MODE: This mode is used to troubleshoot the FGI 202 and/or the pilot probe and ignition electrode, wiring etc. The FGI 202 should be in 'SERVICE' mode when power is first applied to the unit. To enter 'SERVICE' mode, place the 'SERVICE/RUN' mode switch in the 'SERVICE' position. The Display is set to a fast flash indicating the unit is in 'MANUAL' and/or 'SERVICE' mode. If the unit will not switch out of 'MANUAL' when the 'AUTO/MAN' push button is pressed, the unit is in 'SERVICE' mode.

FGI 202 Operation (continued)

Auto Relight Mode

The 'AUTO' mode is the normal mode of operation for the FGI 202. Before the FGI 202 can be put into 'AUTO', the 'SERVICE' switch must be in 'RUN' mode and the **J3** MANUAL ONLY jumper has to be off. If the system is not being forced to 'MANUAL' then the 'AUTO' mode can be selected by simply pressing the 'AUTO/MAN' switch while the system is in 'MANUAL'. If the 'SERVICE' switch is in 'RUN' mode and the **J4** jumper is out, the FGI 202 will always come up in 'AUTO' when power is applied to the unit. The 'AUTO' mode of operation is identified by the Display on solid (ie: not flashing).

In 'AUTO' mode the FGI 202 will attempt to start the pilot burner and main burner in an orderly manner after applying power or after the purge in a Flame Fail situation. The sequence for a successful start up is as follows:

- 1) Clear the Flame Fail alarm.
- 2) Open the pilot solenoid and at the same time begin a 5 second ignition.
- 3) Monitor the Pilot Signal to see if pilot ignition was successful while holding the pilot solenoid open and update the Pilot Signal.
- 4) When the Pilot Signal reaches the first or Low Trip Point, declares a Pilot Proved by indicating so on the Display
- 5) Continue to monitor the Pilot Signal, and compare it to the second or High Trip Point.
- 6) When the Pilot Signal reaches the High Trip Point, open the main burner solenoid to start the main burner.
- 7) Continue to monitor the Pilot Signal to watch for a flame failure.

In the event that the pilot burner did not light, or lighted but did not have enough flame to get the Pilot Signal to the Low Trip Point, (ie: sequence stop at point 3 above), the FGI 202 will shut the pilot solenoid and go into a 15 second purge cycle. After the purge cycle is complete, the FGI 202 will attempt to light the pilot a second time and a third time if necessary. On the unsuccessful third attempt the system will go into a final purge sequence, re-issue the Flame Fail alarm, set itself into MANUAL then wait for someone to address the problem.

FGI 202 Operation (continued)

There is a situation, however, for which the FGI 202 will not attempt subsequent restarts after the first or second attempt and it occurs at point 6 above. When the pilot lights on the first, second or third attempt and the Pilot Signal gets over the Low Trip Point three non operative situations can arise. **The three situations and the system reaction are as follows:**

- 1) The Pilot Signal reaches the Low Trip Point but very slowly increases towards, but does not reach the High Trip Point within five (5) minutes.
- 2) The Pilot Signal reaches the Low Trip Point, rises to a point before reaching the High Trip Point, and then falls off in value of more than 50 degrees C.
- 3) The Pilot Signal reaches the Low Trip Point, rises to a point and then stops for any more than two (2) minutes before the High Trip Point is reached.

The System reaction to the above three situations is to shut the pilot and main burner solenoids off, and issue a Flame Fail alarm. Unlike the third attempt failure, the system will not set itself into 'MANUAL' mode and this serves as an indicator as to the problem the system encountered.

FGI 202 Operation (continued)

Manual Mode

The 'MANUAL' mode of operation allows the user to operate any of the FGI 202 functions manually by using the Manual Operators on the front panel. If the FGI 202 has been forced to 'MANUAL' Only with Jumper **J3** in the IN position the Manual Operator must be used to light the burners and the Display will be on solid at all times. If the FGI 202 is in 'AUTO/MANUAL' mode the unit may be switched to 'MANUAL' mode by pressing the 'AUTO/MAN' push-button when the unit is in 'AUTO' mode. When 'MANUAL' mode is selected, the Display will be set into a fast flash to alert the operator that 'MANUAL' has been selected and the unit will not do an auto relight when unattended.

To light the burner system in 'MANUAL' mode, the operation of the 'MANUAL' operators will follow the same sequence 'AUTO' mode does with one exception, that being when the main burner is turned on. Take note of this sequence change in 'MANUAL' as the main burner could switch off in a transfer from 'MANUAL' to 'AUTO'.

The 'MANUAL' light up sequence for the FGI 202 is as follows:

1) Both pilot and main burner are off and the purge cycle is complete.

2) Light the Pilot Burner:

- Push and hold the Open Pilot push button.
- At the same time or shortly after push the Pilot Ignition push button.
- Release the Pilot Ignition push button after 2-3 seconds and continue to hold the Open Pilot push button. Push the Pilot Ignition push button again if you feel you need to.
- After a short while the Pilot Signal should increase as indicated by the displayed pilot signal.
- Continue to hold the Open Pilot push button until the FGI 202 indicates Pilot Proved
- Release the Open Pilot push button.

3) Light the Main Burner:

- Press the Switch Main push button.

FGI 202 Operation (continued)

NOTE: When the Switch Main push button is pushed the Main Burner solenoid will open to allow instrument air to open the Main Burner shut down valve. In some cases and with some solenoid/valve combinations and piping, the main burner may come on too quickly and without sufficient air support, will choke for a short while until the stack exhaust is built up to get new fresh air in to support combustion. There are two things that can be done to alleviate this problem:

- 1) Prior to lighting the main burner, close the main burner isolation valve (block valve). After the pilot is established (Pilot Proven), press the Switch Main push button to open the solenoid (the control valve will open but the gas to the burner will be blocked in to the main burner). With fuel gas supply up to the block valve, slowly open the valve to light off the main burner from the pilot. Pause and confirm that the main burner is indeed lit off, then very slowly open the valve to full open. The burner should come to full fire very smoothly without any choking if the temperature controller is calling for full fire. This procedure should always be followed on initial start up and if the heater has been down for an extended period of time.

The above procedure is advisable when lighting the burner manually but does not do any good when the unit is auto relighting. Read on.

- 2) If the main burner is coming on too strong, too fast in 'AUTO' mode, a flow-limiting orifice can be installed in the tubing outlet of the Main Burner solenoid. The most acceptable flow limiting orifice we have found is the AMOT 2727C. This device will limit the outflow without limiting the reverse flow (vent outflow) and is adjustable to bring the main burner on slowly and safely.

Service mode

'SERVICE' mode is used for testing or troubleshooting the FGI 202. It is not intended to be used as a formal operating mode. The 'SERVICE' mode forces the FGI 202 into 'MANUAL' and any attempt to spark the ignitor or to bring the pilot and/or the main burner on is suppressed by any 'AUTO' action. The 'SERVICE' mode is intended for first time start up and working on the system with no surprise happenings. In 'SERVICE' mode the front panel operates in the 'MANUAL' mode only.

FGI 202 Calibration

Warning !!

Titan Logix Corp. is not responsible for miscalibration or damage caused to the FGI 202 system by persons attempting to calibrate the unit.

Bench Test and Initial Settings

REQUIRED EQUIPMENT:

To calibrate the FGI 202 the following equipment is needed:

- A millivolt generator (thermocouple simulator)
- A voltmeter accurate to 0.001 Volts
- A small precision flathead screwdriver
- A power supply (a source of 12 or 24 VDC)

SET UP:

1. Attach the millivolt generator leads (+ive and -ive) to TC INPUT, + and -.
2. Attach the power source to SUPPLY INPUT, +ive to 12-30VDC and -ive to common.
3. Monitor voltage readings at the designated test points

SETTING THE LOW TRIP POINT TO 200 C:

1. Place the FGI 202 in 'SERVICE' mode by putting the 'SERVICE' / 'RUN' mode switch to "SERVICE".
2. Measure the voltage on the test points 'TC OP VOLTS' and 'GND'. These test points are found on the upper left hand corner of the master (FGI 202-M).
3. Using a thermocouple simulator, adjust the output until the volt meter reads 2.015V.
4. Turn the Low Adjust Potentiometer (located on the left side of the FGI 202M circuit board) clockwise until the Above Low LED goes off. The Above Low LED may already be off so there is no need to turn the Pot clockwise any further.
5. Slowly turn the Low Adjust Potentiometer counter clockwise until the Above Low LED just comes on.

FGI 202 Calibration (continued)

SETTING THE HIGH TRIP POINT TO 600 C:

1. Place the FGI 202 in 'SERVICE' mode by putting the 'SERVICE/RUN' mode switch to "SERVICE".
2. Measure the voltage on the test points 'TC OP VOLTS' and 'GND', (Master board, upper left corner).
3. Using a thermocouple simulator, adjust the output until the volt meter reads 6.161V.
4. Turn the High Adjust Potentiometer (located on the left side of the FGI 202M circuit board) clockwise until the Above High LED goes off. The Above High LED may already be off.
5. Slowly turn the High Adjust Potentiometer counter clockwise until the Above High LED just comes on.

FIELD/ON LINE CALIBRATION:

The best way to calibrate the FGI 202 is to calibrate the unit on line and with the pilot that it will be working with from installation on. To do the OnLine calibration it is necessary to understand the two-trip point/purge operation of the FGI 202.

As the Pilot Signal rises from ambient to the sensor temperature of the pilot flame it will pass through a point, say 200 degrees C. on its way to a stable temperature. It is at this temperature that the FGI 202 will acknowledge the pilot flame to be lighted and state a Pilot Proved. As the Pilot Signal continues its climb to its high point, it will (hopefully) pass through the second trip point which is defined as the High or Off Trip Point. Passing through the High Trip Point (rising) will arm the system for a future Flame Failure. When the Pilot Signal falls below the High Trip Point the fuel gas to the burners will be shut down and the system will take the appropriate action according to the mode of operation ('AUTO' or 'MANUAL'). The common action will be to shut in the pilot and main fuel gas to shut the fuel flow off to the burners. The span between the High Trip Point and the Low Trip Point when the Pilot Signal is falling is defined as the Purge Time. All functions to relight the burner system during the Purge time will be locked out with no reaction to any manual action and auto relight will not try until the purge is complete.

FGI 202 Calibration (continued)

Both the Low Trip Point and the High Trip Point are adjustable. Adjustments are made on the Low Adjust Pot and the High Adjust Pot. These Pots are found on the FGI 202-M board (upper left) and are distinguishable as grey boxes with a screwdriver adjuster in the upper right hand corner of the device. Always, and on both Pots, clockwise rotation of the adjustment screw will raise the Trip Point and counter clockwise will lower the Trip Point.

The most practical method of calibrating the FGI 202 on line is to have the burner system down and the FGI 202 in 'MANUAL' or 'SERVICE' mode. Assuming the burner system is down and we are in manual, the following steps will complete an 'On Line' calibration:

- Turn the High Adjust Pot clockwise 4-5 full turns.
- Set the FGI 202 to 'MANUAL' and light the pilot.
- Get the pilot proved and wait for 2-3 minutes for the Pilot Signal to stabilize.
- Start the main burner and note if main burner fire has any effect on the Pilot Signal. If the main burner causes the Pilot Signal to fall, calibrate the system with the main burner running. If the main burner has no effect, or causes the Pilot Signal to rise then calibrate the system with pilot only running.
- After the choice is made (ie: pilot only or main and pilot) on when to calibrate the unit, pause and let the probe temperature stabilize.
- Insure that the 'ABOVE HIGH' LED is not on. If the LED is on, turn the Pot clockwise 3-4 more turns. This should result in a Flame Failure and we will have start the process over again. If it does not result in a Flame Failure, then continue turning the Pot clockwise until the unit goes into Flame Failure.
- If the 'ABOVE HIGH' LED is not lit, the High Trip Point is above the current Pilot Signal. The action here is to lower the High Trip Point to the current Pilot Signal level, then add some dead band.
- Turn the 'HIGH ADJUST' Pot counter clockwise slowly until the 'ABOVE HIGH' LED lights. Pause. Continue turning the Pot counter clockwise two (2) full to add the dead band.
- The unit should be calibrated and ready to go.

FGI 202 Troubleshooting

The front panel Display is off:

- 1) Check power connections.
- 2) Unit may be in sleep mode. Press a front panel push button once. If the Display comes on, the unit was in sleep mode. Remove jumper **J4** if 'Sleep' Mode is not wanted.
- 3) Check for master system lockouts. (Some systems will remove power to the FGI 202 for burner shut down). Reset master system if required.

If there is a 'Bad Sensor' error (There is an "XX" in the pilot signal digits):

- 1) Check thermocouple connections. If all connections are okay, the thermocouple or the extension wire may be bad.

Pilot burner lights okay but Pilot Signal does not increase in value. There is no faulty probe indication.

- 1) Suspect the thermocouple probe or extension wire to be shorted outside the pilot flame. This will give an alternate thermocouple junction that will not change with pilot flame.

Pilot burner lights okay and the pilot signal rises to about 200 degrees C, then suddenly goes into 'Faulty Probe'.

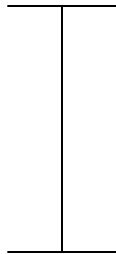
- 1) Suspect the thermocouple wires to be connected in the reverse polarity.
- 2) If the polarity is correct, suspect a ground loop on the thermocouple wires (ie: shield grounded on both ends). Ground only one end of shield.

In 'MANUAL' the pilot lights ok, the Pilot Signal rises above the Low Trip Point (Pilot Proved) and the main burner is turned on with the Switch Main push button. When the FGI 202 is set into 'AUTO' the main burner shuts down.

- 1) The Pilot Signal has not reached the High Trip Point and in 'AUTO' the main burner cannot run until the High Trip Point is reached. Either adjust the pilot flame, probe position or re-calibrate the High Trip Point.

Burner Controls Thermocouple

Extend thermocouple probe 2" beyond nozzle and bend 10% toward center



3/8" gap between electrode tip and nozzle. A piece of 3/8" instrument tubing should 'snap' through the gap

Do not overtighten Swagelok fitting. Should be just tight enough so probe cannot move.

NOTE: If there are no outside slots on the nozzle then bend or place the electrode tip at the end of the nozzle while still maintaining a 3/8" gap.

Using a tie-strap on the cable, try to maintain a slight loop on the ignition cable.

Ensure silicone boot is pushed on fully



Figure 1.1

Burner Controls Terminal Card

FGI 202 - T Terminal Card

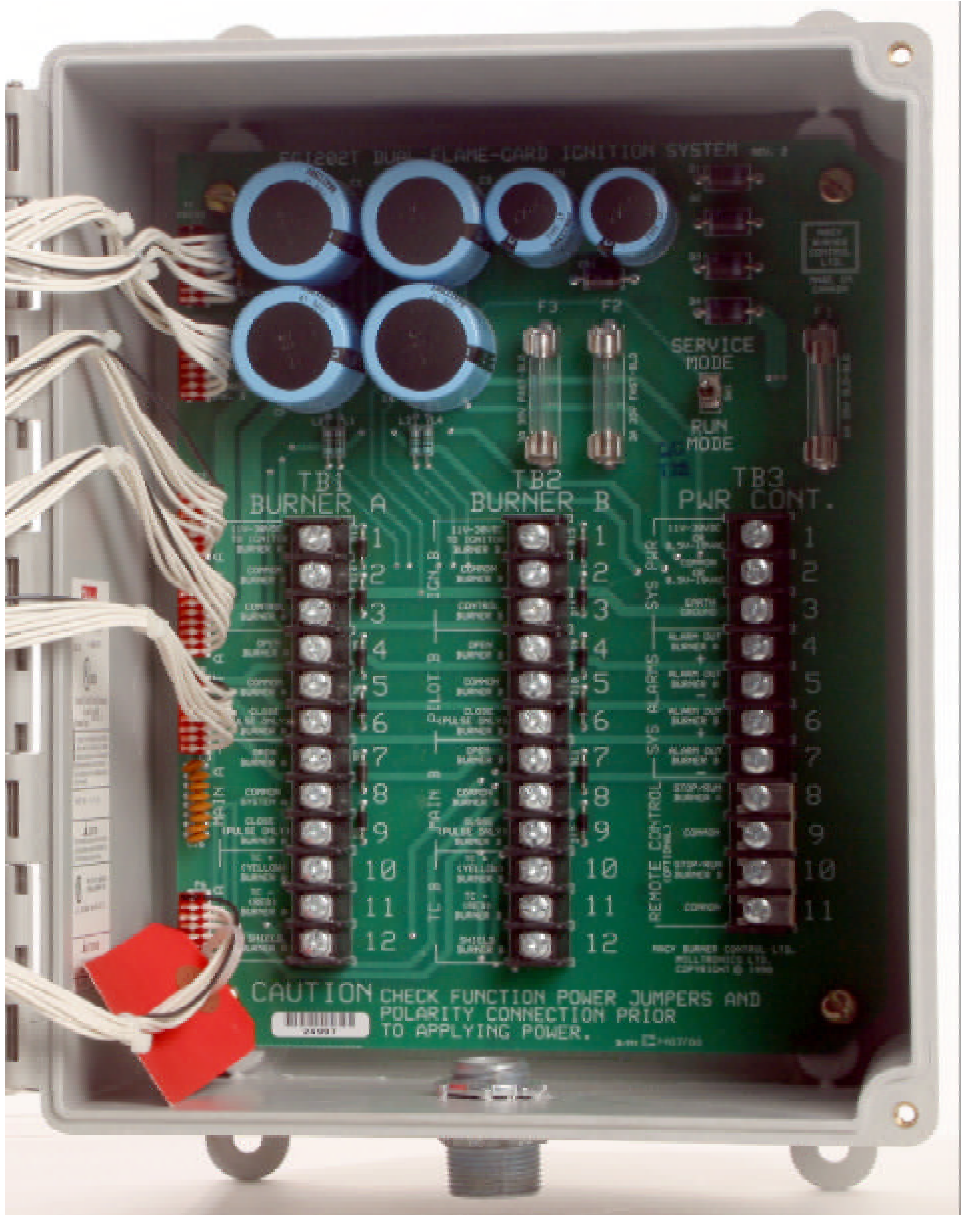


Figure 2.2

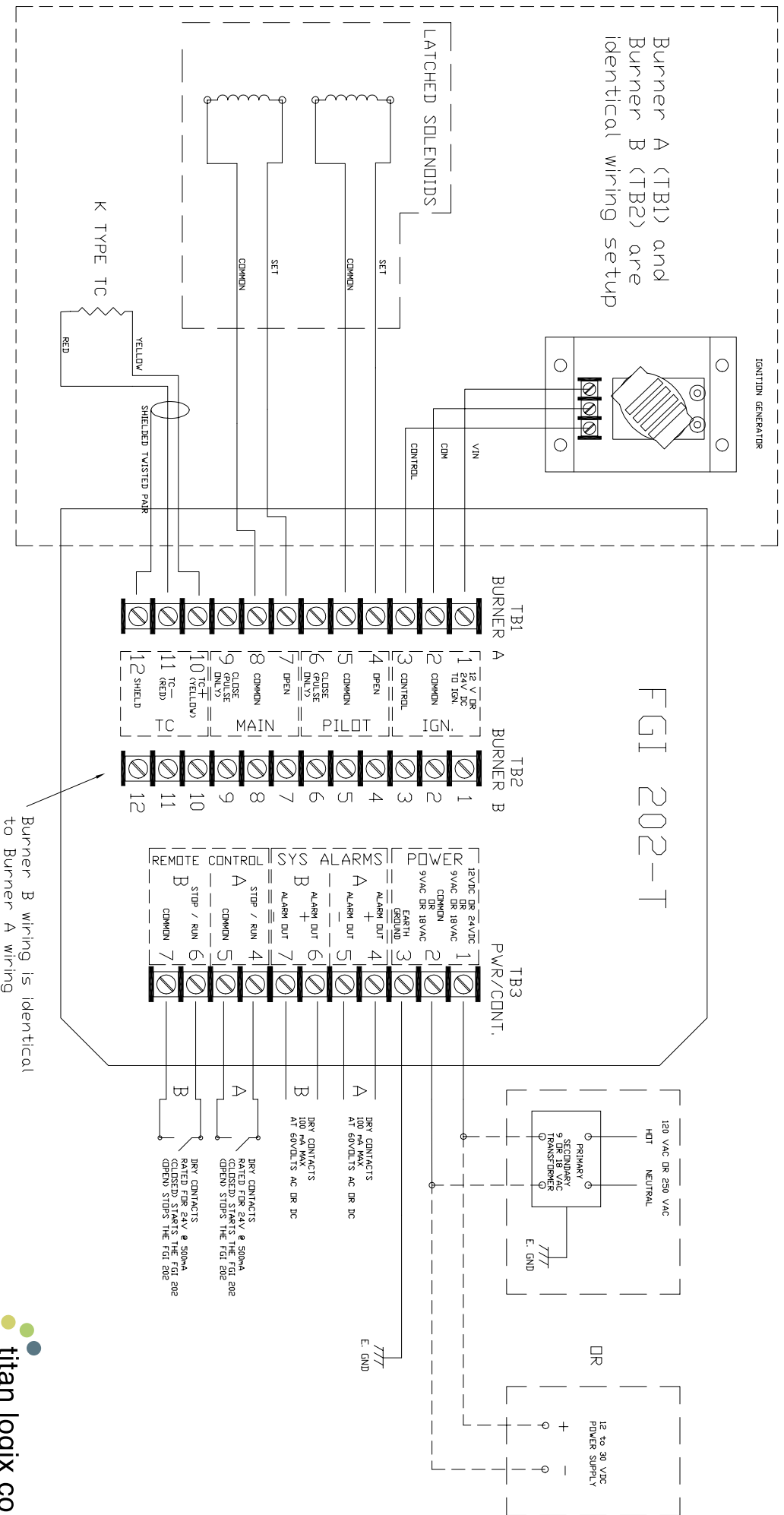
Burner Controls Product Keypad



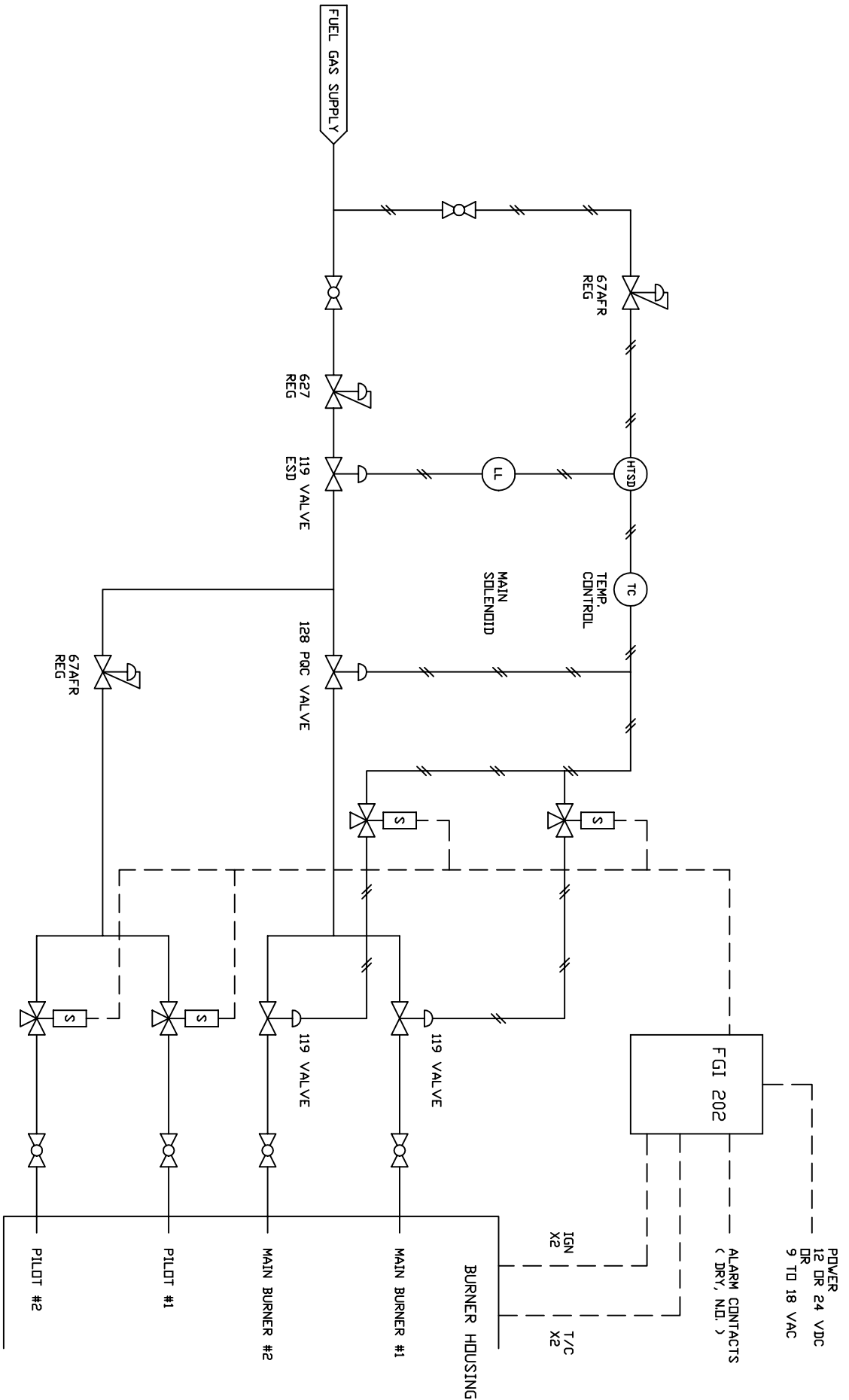
Figure 2.1

FGI 202 WIRING DIAGRAM

Burner A (TB1) and Burner B (TB2) are identical wiring setup



Burner B wiring is identical to Burner A wiring



REV	DESCRIPTION	DATE	BY	SCALE	DRG TITLE
1	125 RNS			1:1	DUAL BURNER FUEL GAS CONTROL
2	63 RNS			1:1	
3	32 RNS			1:1	
4	PROJECTION			1:1	

REV	DESCRIPTION	DATE	BY	SCALE	DRG TITLE
1	125 RNS			1:1	DUAL BURNER FUEL GAS CONTROL
2	63 RNS			1:1	
3	32 RNS			1:1	
4	PROJECTION			1:1	

REV	DESCRIPTION	DATE	BY	SCALE	DRG TITLE
1	125 RNS			1:1	DUAL BURNER FUEL GAS CONTROL
2	63 RNS			1:1	
3	32 RNS			1:1	
4	PROJECTION			1:1	

REV	DESCRIPTION	DATE	BY	SCALE	DRG TITLE
1	125 RNS			1:1	DUAL BURNER FUEL GAS CONTROL
2	63 RNS			1:1	
3	32 RNS			1:1	
4	PROJECTION			1:1	



titan logix corp.
 FORMERLY NAGY BURNER CONTROL
 TEL 786-462-4093
 PART NO. PNID7
 REVISION SH1 1/1